

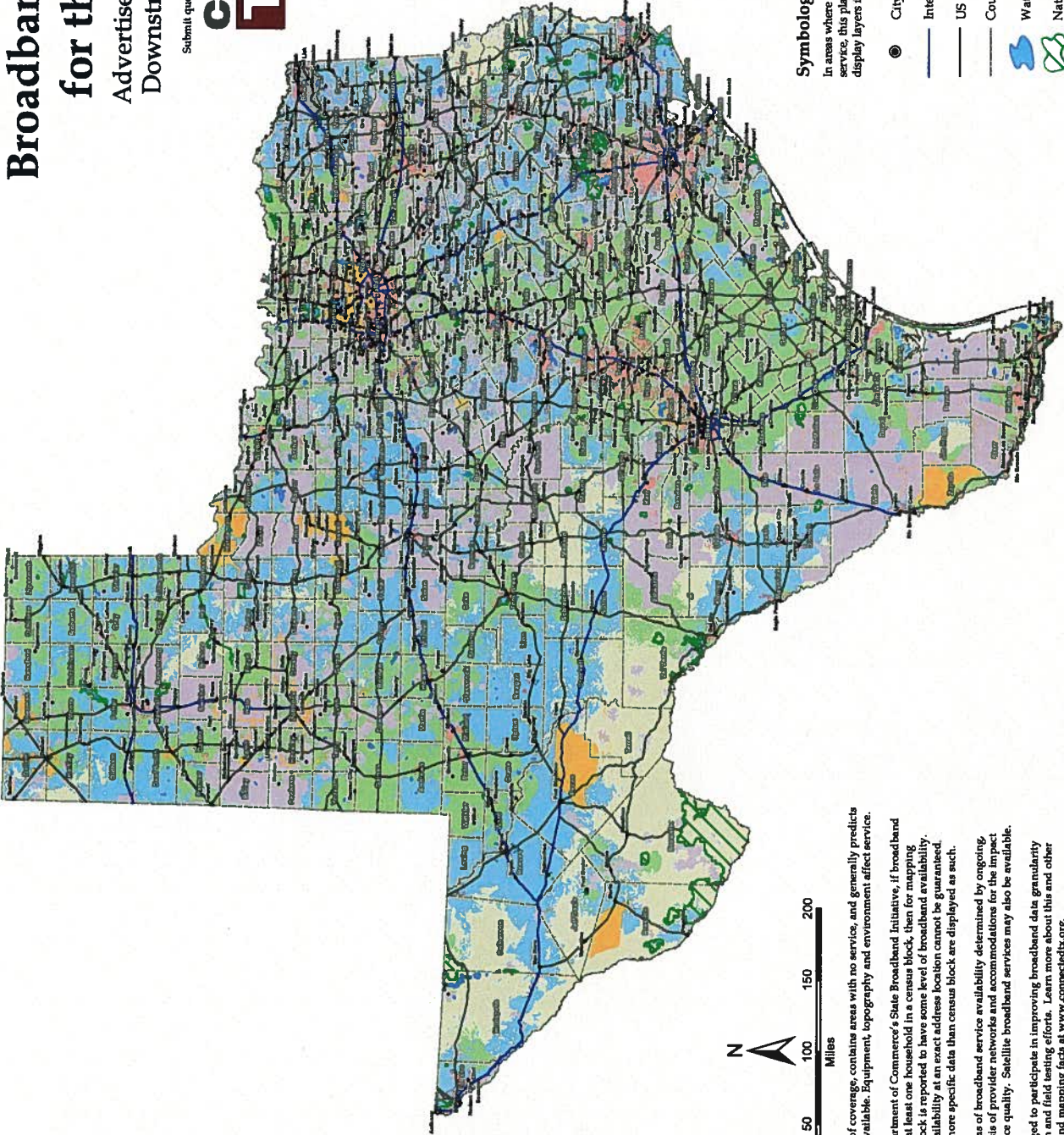
Broadband Service Inventory for the State of Texas

Advertised Speeds of at Least 768 Kbps
Downstream and 200 Kbps Upstream

Submit questions or recommended changes to: maps@connectedtx.org



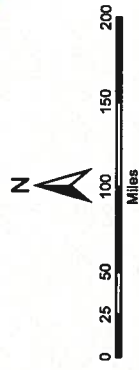
Updated April 1, 2012
Data Version



Symbology

In areas where multiple broadband providers offer service, this platform composite map stacks coverage display layers in the order presented below.

- City
- Interstate
- US Road
- County Boundary
- Water
- National and State Lands
- Fiber Broadband Available
- Cable Broadband Available
- DSL Broadband Available
- Fixed Wireless Broadband Available
- Mobile Wireless Broadband Available
- Unserved Areas



*This map is not a guarantee of coverage, contains areas with no service, and generally predicts where outdoor coverage is available. Equipment, topography and environment affect service.

As required by the US Department of Commerce's State Broadband Initiative, if broadband service is available to at least one household in a census block, then for mapping purposes that census block is reported to have some level of broadband availability. As such, broadband availability at an exact address location cannot be guaranteed. Providers supplying more specific data than census block are displayed as such.

This map represents areas of broadband service availability determined by ongoing, in-depth technical analysis of provider networks and accommodations for the impact of external factors on service quality. Satellite broadband services may also be available.

Map users are encouraged to participate in improving broadband data granularity through data validation and field testing efforts. Learn more about this and other broadband mapping facts at www.connectedtx.org.