



Discussion of Transportation Needs and Funding: Implications in the Dallas-Fort Worth Region

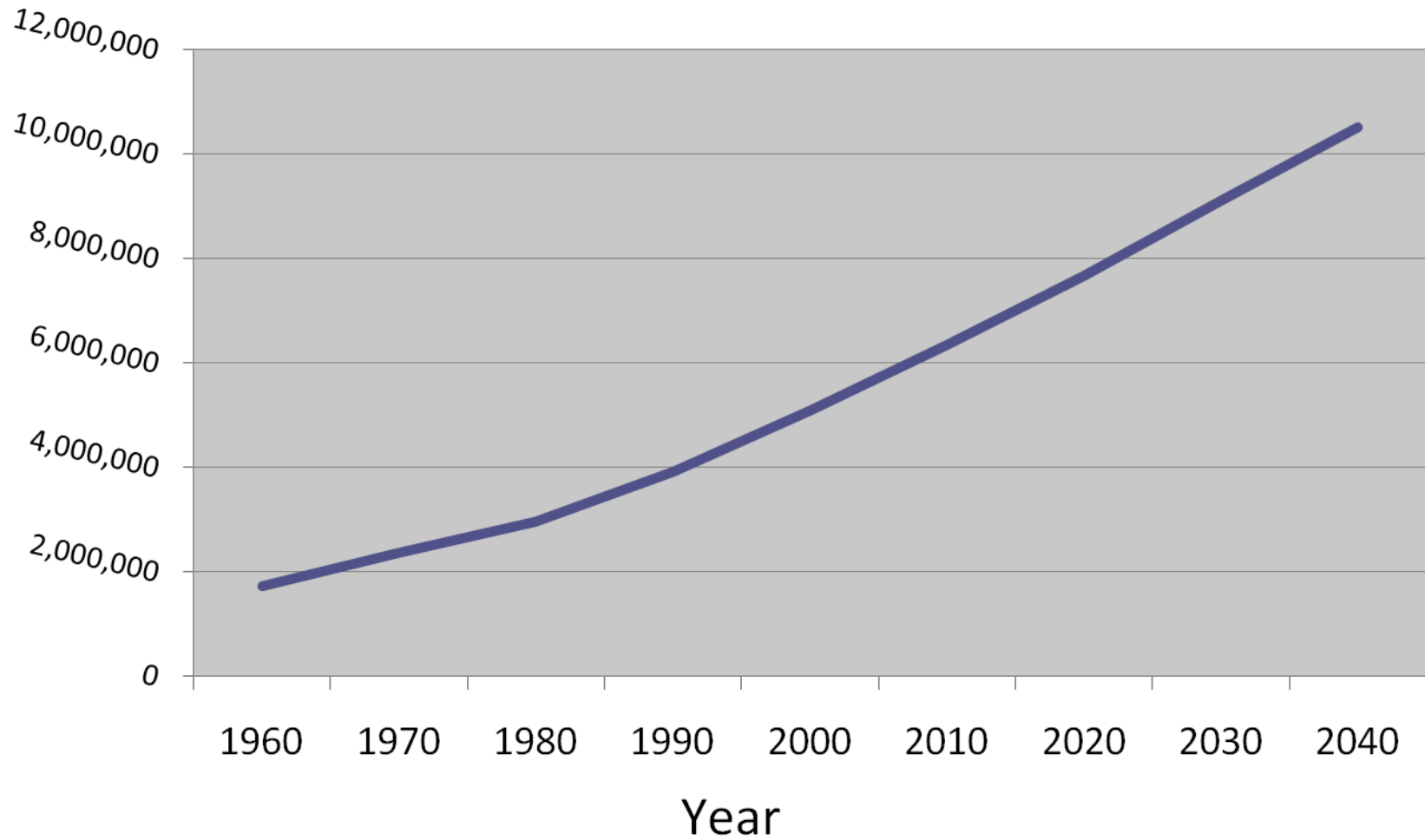
**Testimony to Joint Hearing
Senate Transportation and
Homeland Security Committee
House Transportation Committee**

Michael Morris
February 1, 2010

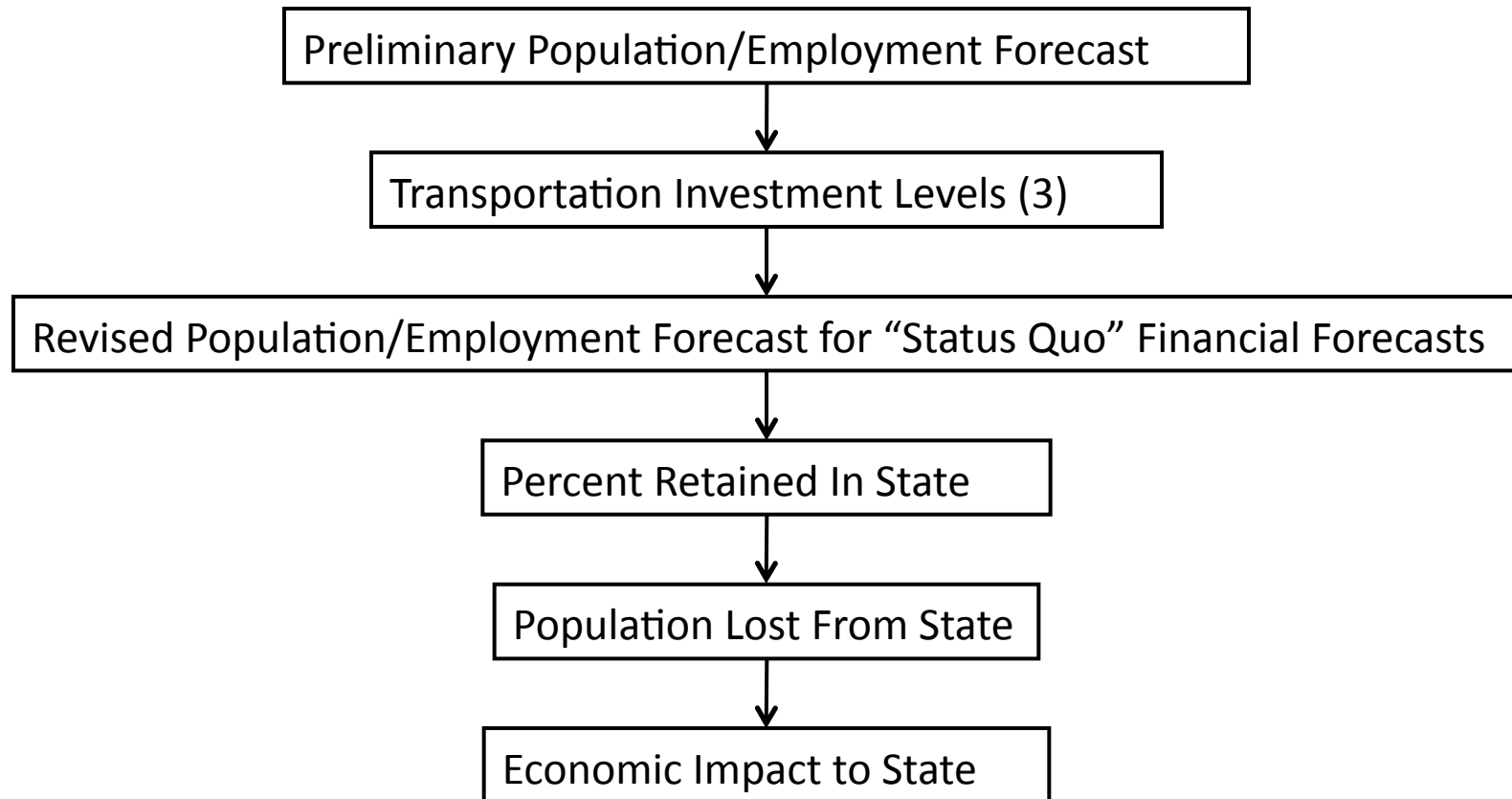
Conclusions

- Gas tax funded capacity projects at risk
- Legislative delay leads to greater imbalance with more toll projects
- Current infrastructure will not be able to be maintained, especially bridges
- Future implications of general tax revenue to Texas
- Legislative inaction results in inefficient project delivery, and wasted maintenance today
- Eventual cost, if ever, will be a lot higher

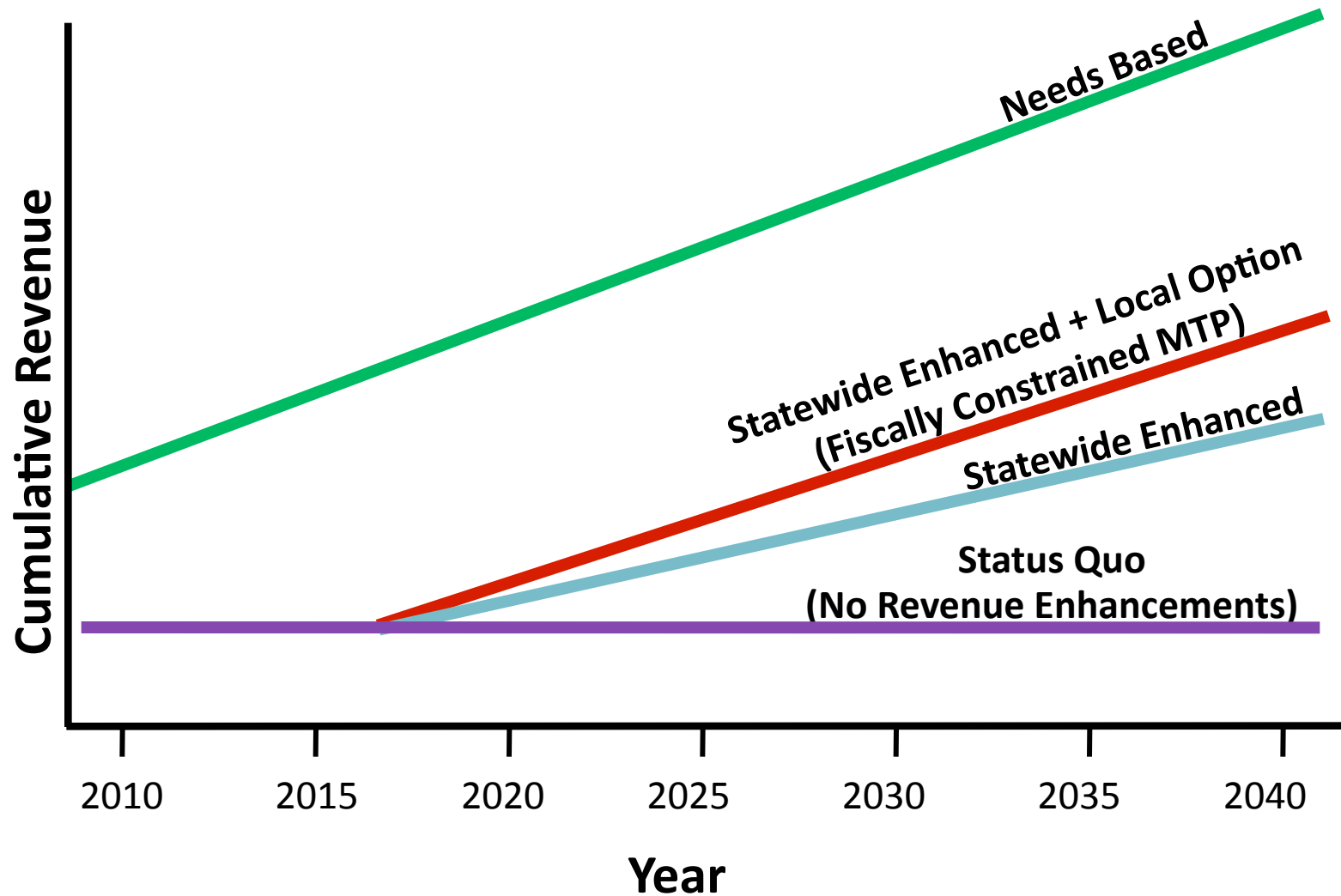
Dallas-Fort Worth Population Growth



Economic Impact to Region and State



Revenue Scenarios



Status Quo Revenue

- Peak-period travel times in Dallas-Fort Worth would increase by 180%
- Demographic growth would be severely impacted
- Some bridges and highway lanes would be closed
- Significant financial implications to Texas General Revenue

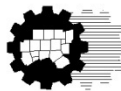
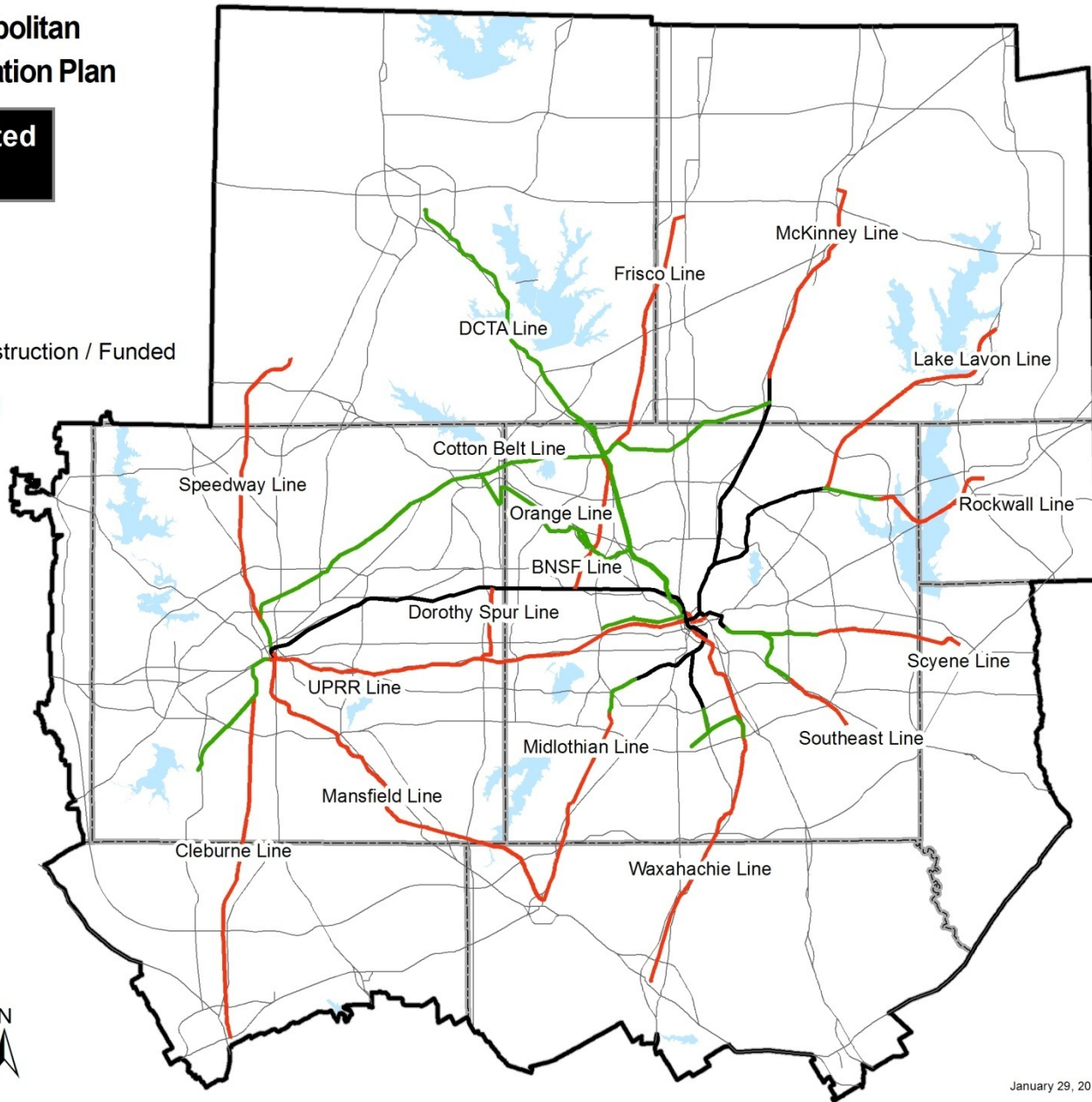


The Metropolitan Transportation Plan

Possible Projects Affected by Current Funding

Rail System

- Existing Rail Corridors
- Rail Corridors Under Construction / Funded
- Rail Corridors Not Funded
- Highways



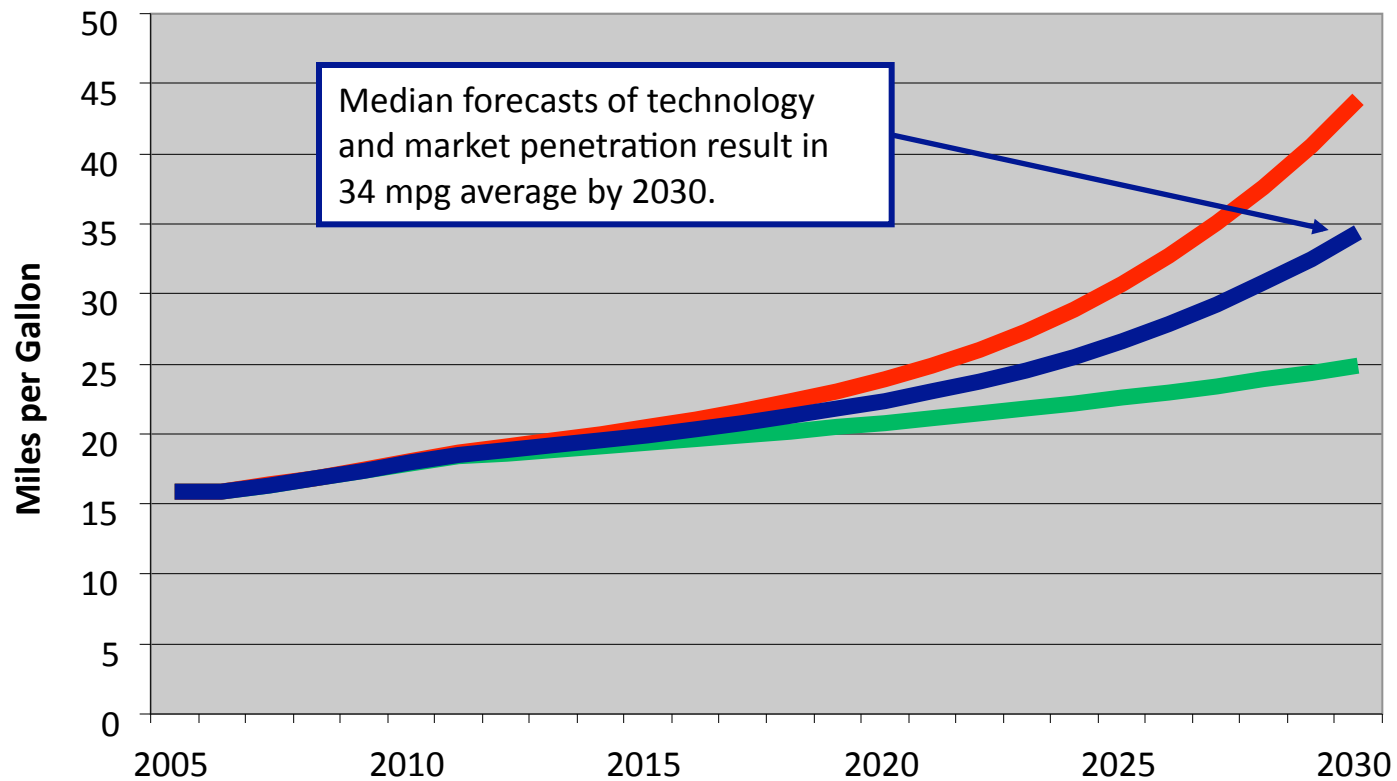
North Central Texas
Council of Governments
Transportation



TRENDS MODEL

Captures Fuel Efficiency Impacts and Provides Flexibility for Evaluating Scenarios

Fuel Efficiency Scenarios



Gas Tax Indexing to Fuel Efficiency

What We Mean

Year	Average Annual Mileage	Gas Price Per Gallon	Average Miles Per Gallon	Average Gallons Consumed	Annual Cost
		\$2.360 gas			\$1,980 gas
2010	15,000	<u>\$0.384 tax</u>	18	833	<u>\$ 320 tax</u>
		\$2.750 total			\$2,300 total
		\$2.360 gas			\$1,015 gas
2030	15,000	<u>\$0.384 tax</u>	35	429	<u>\$ 165 tax</u>
(no indexing)		\$2.750 total			\$1,180 total
		\$2.360 gas			\$1,015 gas
2030	15,000	<u>\$0.745 tax</u>	35	429	<u>\$ 320 tax</u>
(indexing to fuel efficiency)		\$3.110 total			\$1,335 total